



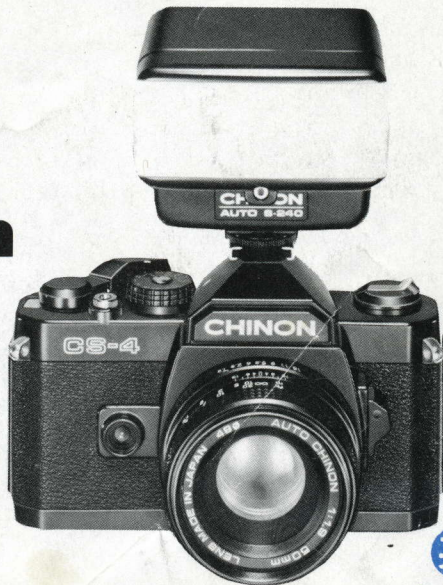
# CHINON

## CS-4

### Compact 35mm Single Lens Reflex Camera

Images are half way into this manual

## INSTRUCTION MANUAL



## CONTENTS

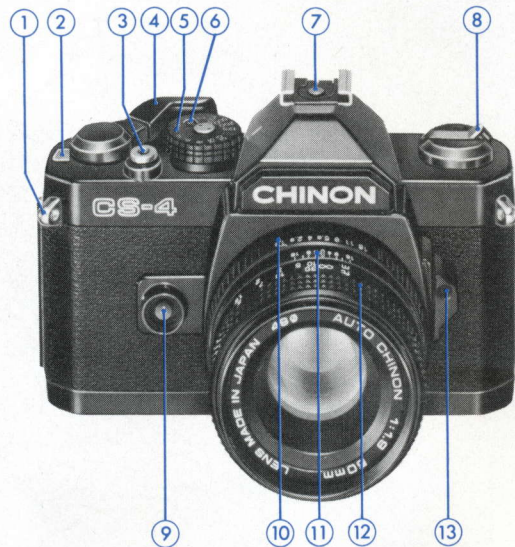
Nomenclature . . . . .	2
Specifications . . . . .	4
Introduction . . . . .	6
Basic Operation . . . . .	6
Installing the Batteries . . . . .	8
Battery Testing . . . . .	8
Film Loading . . . . .	9
Memo Holder . . . . .	10
Frame Counter . . . . .	10
Film Advancement . . . . .	11
ASA/DIN Setting . . . . .	11
Shutter Speed Setting . . . . .	12
Aperture Setting . . . . .	12
Focusing . . . . .	13
Determining Correct Exposure . . . . .	14
Unloading Exposed Film . . . . .	15
Interchangeable Lenses . . . . .	16
Using the Electronic Flash . . . . .	17
Depth of Field . . . . .	20
Infra-red Photography . . . . .	21
Camera Care . . . . .	21
Optional Accessories . . . . .	22

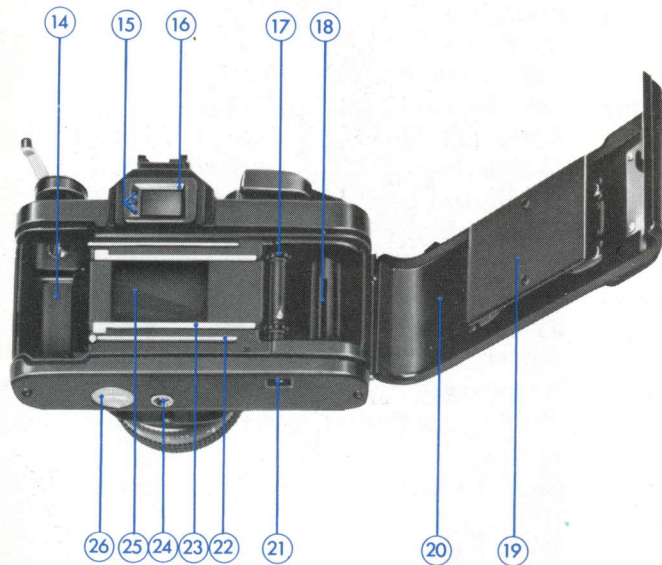





## NOMENCLATURE

1. Shoulder Strap
2. Frame Counter
3. Shutter Release Button
4. Film Advance Lever
5. Shutter Speed Dial
6. Film Speed Window (ASA/DIN)
7. Hot Shoe
8. Film Rewind Knob/Back Cover Opener
9. Action Lamp
10. Aperture Ring
11. Depth of Field Scale
12. Focusing Ring
13. Exposure Meter Switch





14. Film Chamber
15. Exposure Indicator LED's/Battery Check Lamp
16. Viewfinder Eyepiece
17. Sprocket Teeth
18. Take-up Spool
19. Film Pressure Plate
20. Film Chamber Cover
21. Rewind Button
22. Film Guide Rail
23. Film Rail
24. Tripod Socket
25. Shutter
26. Battery Compartment Cover



This manual is for reference and historical purposes, all rights reserved.

**This page is copyright© by M. Butkus, NJ.**

This page may not be sold or distributed without the expressed permission of the producer

I have no connection with any camera company

On-line camera manual library

This is the full text and images from the manual. This may take 3 full minutes for the PDF file to download.

**If you find this manual useful, how about a donation of \$3 to: M. Butkus, 29 Lake Ave., High Bridge, NJ 08829-1701 and send your e-mail address so I can thank you. Most other places would charge you \$7.50 for a electronic copy or \$18.00 for a hard to read Xerox copy.**

**This will allow me to continue to buy new manuals and pay their shipping costs.**

**It'll make you feel better, won't it?**

**If you use Pay Pal or wish to use your credit card,  
click on the secure site on my main page.**

Donate: [www.PayPal.me/butkus](http://www.PayPal.me/butkus)

venmo: @mike-butkus-camera Ph. 2083

**SPECIFICATIONS OF CHINON CS-4 COMPACT SLR CAMERA**

**Type** : 35mm SLR Compact with LED type light measuring system.

**Picture Format** : 24 × 36mm.

**Lens Mount** : M-42 Screw Mount.

**Mirror** : Quick return, shockless system.

**Shutter** : Seiko MFC metal focal plane shutter, vertical path.

**Shutter Speed** : 1 sec. – 1/1000 sec., “B”.

**Viewfinder** : Fixed eye-level pentaprism, central split image with microprism collar and ground glass.

**Viewfinder Magnification** : 0.87 × (@50mm, ∞).

**Viewfinder Visibility** : 92%

**Exposure Meter** : TTL, center weighted measuring system employing a silicon blue cell, 3 step exposure indicator with 3 LEDs.

**Exposure Range** : EV+2 (F/1.9, 1 sec.) to EV+18 (F/16, 1/1000 sec.) – ASA 100 F/1.9 lens.

**ASA Range** : 25 – 1600 (DIN 15 – 33) with safety lock.

**Film Advance** : Single stroke in an arc of 130° with 25° stand off.

**Film Counter** : Automatically indicates number of exposures and resets to “S” when camera back is opened.

**Film Rewind** : Folding crank type.

**Accessory Shoe** : Hot shoe type with X sync.

**Action Lamp** : Red LED illuminates while the shutter operates.

**Synchronization** : Flash sync. at 1/60 sec.

**Power Source** : Two 1.5V Alkaline batteries (LR44, A76) or two 1.5V silver oxide batteries (SR44, S76, G-13).

**Battery Test** : Built-in with LED indicator.

**Accessories** : Multi-coated lenses, Auto electronics flashes, carrying case and many more.

**Body Dimensions** : 135 (W) × 86 (H) × 50.5 (D) mm. (5.33" × 3.38" × 1.99")

**Body Weight** : 455 grams (16.05 oz.).



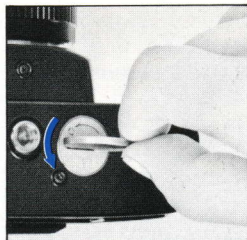


## INTRODUCTION

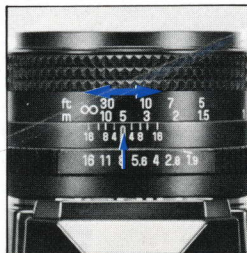
www.butkus.us

## BASIC OPERATION

Welcome to the world of Chinon photography! Your Chinon CS-4 camera is one of the most advanced 35mm SLR cameras incorporating features normally found only in higher priced models. This fantastic compact camera employs the latest state-of-the-art electronics which will ensure carefree operation everytime. In order to take full advantage of the features of your CS-4, please read the instruction manuals carefully so as to totally familiarize yourself with your camera before actually starting to take pictures. We thank you for choosing Chinon quality products and we wish you years of satisfaction and enjoyment.



1. Install the batteries.



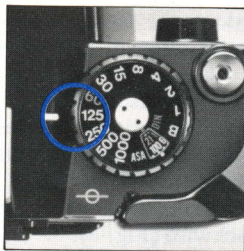
5. Focus the subject.



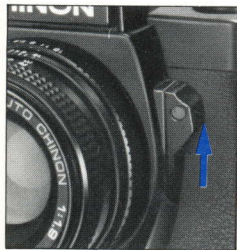
2. Load the camera.



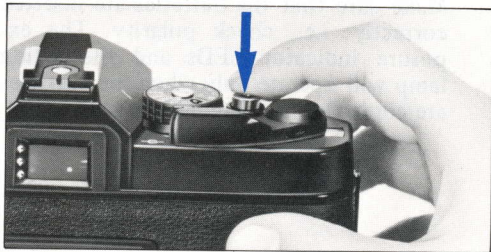
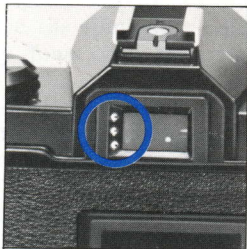
3. Set ASA film speed.



4. Set either the shutter speed or the lens opening according to your photographic requirement.



6. Push up the exposure meter switch to activate the exposure indicator LEDs. Green LED indicates correct exposure.



7. Depress the shutter release button.



## INSTALLING THE BATTERIES BATTERY TESTING

1. By using a coin, unlock the battery compartment cover by turning it counter-clockwise (Fig. 1).
2. Place two 1.5V Alkaline batteries (LR44, A76) or two 1.5V silver oxide batteries (SR44, S76, G-13) with the minus (-) side facing upwards (Fig. 2).
3. Replace the battery compartment cover by turning fully clockwise (Fig. 3).

**NOTE:** Clean the batteries with a dry cloth or tissue paper before inserting and thereafter every six months.

Make sure that the batteries are inserted correctly, i.e., check polarity. The exposure indicator LEDs and the action lamp will operate only when the batteries are correctly installed and not exhausted.

To test the batteries, push up the exposure meter switch. If the batteries are in good condition, one of three LED's located at the left side of the viewfinder frame will illuminate (Fig. 4). If a LED fails to illuminate, the batteries are too weak and need to be replaced, they are incorrectly inserted, or the shutter speed selector is set to the "B" position.

Your Chinon CS-4 camera can be used with any type of 35mm film.

1. Pull up the film rewind knob until the camera back pops open (Fig. 5).
2. Then, insert a film cartridge into the film chamber with the protruding end facing the bottom of the camera (Fig. 6).
3. Push in the film rewind knob and slightly turn the knob in either direction until it engages the film cartridge spool.
4. Insert the trimmed end of the film into a slot of the multi-slotted take-up spool.
5. Turn the shutter speed selector to any setting and advance the film while holding the film lightly down on to the transport sprockets.
6. Release the shutter if necessary and advanced the film until the sprockets engage with the upper and lower perforation of the film (Fig. 7).
7. Close the camera back firmly until it locks with a click.
8. Turn the film rewind knob gently until the film slack is taken up and the rewind knob stops. Do not force or further rewind the film.
9. Advance the film and release the shutter two times (Fig. 8). The rewind knob should rotate counterclockwise when the film is advanced and the "1" marking should appear in the frame counter window (Fig. 9).

Images are half way into this manual



## MEMO HOLDER

## FRAME COUNTER

The Chinon CS-4 camera has a built-in memo holder feature. To utilize the memo holder, simply cut off the top of the film box and insert it into the memo holder located on the back cover of your camera. This will enable you to quickly and easily identify the type of film and ASA speed used in your camera (Fig. 10).

Your Chinon CS-4 is equipped with a frame counter which displays the number of exposures and resets automatically upon opening the camera back. When the camera is opened, the counter shows "S" indicating the start of the picture taking process. When film is loaded according to the procedure previously described, the counter displays "1" indicating the camera is ready for the first exposure. Every time the film advance lever is turned the counter will proceed one stop forward. The numbers 24 and 36 are colored in orange to warn the end of commonly available films (Fig. 11).

The action lamp (LED) located on the front of the camera body will illuminate while the shutter is activated. The subject can easily observe when the shutter is released.

Make sure the film has been loaded properly. Operate the film advance lever through a full stroke. When the film end is reached the film advance lever may stop before the lever is fully turned. Do not force the lever. Stop winding at once and rewind the film. Please refer to "Unloading Exposed film" (Fig. 12).

The ASA/DIN speed of the film is specified on the box or in the instruction sheet packed with the film. Set the ASA/DIN speed by lifting up and rotating the shutter speed dial so that the correct ASA/DIN film speed appears in the window. Be sure to check the ASA number whenever you put new film into the camera (Fig. 13).

ASA/DIN Table

	(32)	(50)	(80)	(125)	(160)	(250)	(320)	(500)	(640)	(1,000)	(1,250)	
ASA	25 ●	40 ●	64 ●	100 ●	160 ●	200 ●	400 ●	800 ●	1,600 ●			
DIN	15 ●	17 ●	19 ●	21 ●	24 ●	27 ●	30 ●	33 ●				
	(16)	(18)	(20)	(22)	(23)	(25)	(26)	(28)	(29)	(31)	(32)	



## SHUTTER SPEED SETTING

## APERTURE SETTING

Rotate the shutter speed dial to the left or right to select a suitable shutter speed from the band of "B", 1 to 1/1000 sec., (Fig. 14).

The aperture is set in the usual way by rotating the lens aperture ring until the desired F stop is set against the green index mark on the lens barrel. For further explanation see "Determining Correct Exposure" (Fig. 15 & 16.).

**\*F stop Selection:** The following may be used as a guide to determine the lens F stop when you are using the camera;

Sunny day outside . . . . . F/8 – F/16

Cloudy day outside . . . . . F/4 – F/5.6

Inside (without flash) . . F/1.9 – F/2.8

## FOCUSING

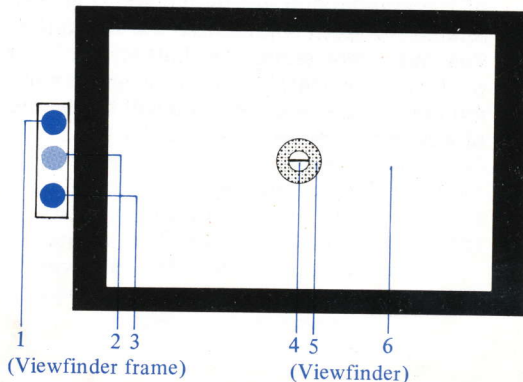
# CS-4

Your Chinon CS-4 has three built-in focusing aids.

1. The center of the viewfinder is a split image with microprism collar which is surrounded by ground glass. When the camera is in focus, the image of these focusing aids become sharpest. While observing the subject through the viewfinder, turn the lens focusing ring until the upper and lower split image match up to form a uniform image (Fig. 17). This split image focusing is particularly helpful when the subject is dominated by vertical lines.
2. The microprism is also helpful. When it is out of focus, the image on the microprism will be composed of collection of asterisks (Fig. 18). These sparkling asterisks will disappear when the focus is properly set. You can double check the focus setting by the image on the ground glass.
3. You can also focus indirectly. Actually measure or estimate the camera-to-the-

subject distance and set the lens focusing ring to the appropriate setting (Fig. 19).

1. Over Exposure Indicator (Red LED)
2. Correct Exposure Indicator (Green LED)
3. Under Exposure Indicator (Red LED)
4. Split-image Rangefinder Spot
5. Microprism Ring
6. Fine Matte Outer Field (ground glass)



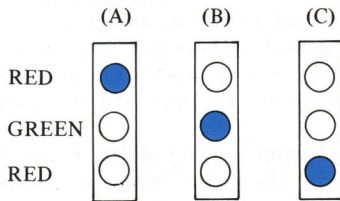


## DETERMINING CORRECT EXPOSURE

Your Chinon CS-4 camera has a Through The Lens (TTL) exposure metering system. Also called an instant aperture closed measuring system. To determine the correct exposure, observe the subject through the viewfinder in the center of the microprism area. Then, push up the exposure meter switch until it is locked and the exposure indicator lamp (LED) located on the left side of the viewfinder frame illuminates (Fig. 20). Should the green lamp (LED) not illuminate, you must turn either the shutter speed dial or the lens aperture ring until the green lamp illuminates. By doing so, you will be assured of a correct exposure.

### \*The Exposure Indicator:

Your Chinon CS-4 camera has three exposure indicator lamps (LED's) located at the left side of the viewfinder frame. These three lamps control the condition of exposure of the camera. The condition of exposure can be confirmed in the following three ways:



- A. Over Exposure Indicator
- B. Correct Exposure Indicator
- C. Under Exposure Indicator

## UNLOADING EXPOSED FILM

When rotating the shutter speed dial or the lens aperture ring, you must operate them slowly since the exposure indicator lamps are very sensitive. Generally you should select a shutter speed first then operate the lens aperture ring until the proper exposure is obtained. A tripod should be used for shutter speeds lower than 1/30 second.

**NOTE:** The exposure indicator lamp does not illuminate when the shutter speed dial is set at the "B" position, batteries are incorrectly installed or too weak, or the meter switch is not pressed up to the "ON" position.

The exposure meter switch is automatically returned to the "OFF" position when the shutter release button is depressed. You can also return the switch to the "OFF" position by pressing it down. Be sure not to keep the switch in the "ON" position for a long period of time. This will prevent unnecessary battery drain.

When the film in the camera is fully exposed, the film advance lever will stop. Do not attempt to force the lever any further. Rewind the film and replace with a new film.

1. Push in the rewind button at the bottom of the camera (Fig. 21).
2. Unfold the rewind crank of the rewind knob and turn the rewind crank clockwise (Fig. 22). You will feel friction as the film is rewound. Suddenly, when the film is rewound completely the friction will decrease and the rewind crank will turn with ease.
3. pull up the rewind knob to open the camera back (Fig. 23). When the camera back is opened, the frame counter will automatically reset to the "S" position. The rewind button on the bottom of the camera will pop out upon the next advancement of the film advance lever. Your exposed film should be processed without delay for best result.

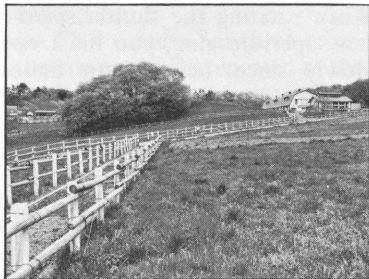


## INTERCHANGEABLE LENSES

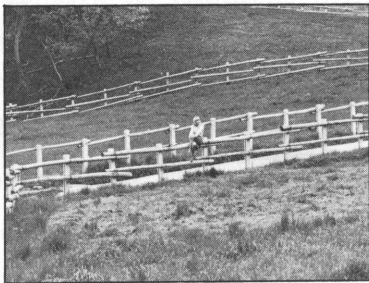
Your Chinon CS-4 camera is equipped with a Chinon screw mount which accepts all interchangeable lenses with M-42 lens mount. To remove the lens from the camera body, press down the exposure meter switch, holding the camera body in one hand and grip the lens with the other, turning it counterclockwise until it is removed (Fig. 24).

**NOTE:** Do not remove or replace the lens while the camera is functioning. To replace the lens, insert the lens into the camera body and turn it clockwise until secured in position finger-tight (Fig. 25).

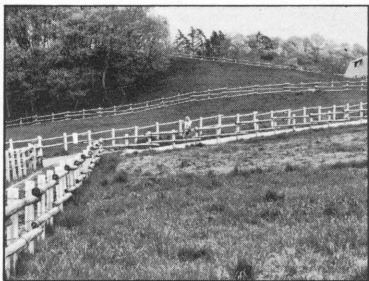
28mm



135mm



## USING THE ELECTRONIC FLASH



50mm



500mm

It is advisable to use a flash when the exposure indicators detect that the light level is too low, such as indoors, at night time, or in daylight when the subject is too dark to provide adequate exposure.

Electronic flash units as well as conventional flash units using flash bulbs may be utilized. Your CS-4 has a hot shoe (Accessory shoe with built-in flash contact) for "X" synchronization (Fig. 26). Electronic flash units having a hot-shoe (built-in contact) may be used without connection cord. As the hot shoe has "X" type synchronization, it can be used with electronic flash at 1/60 sec., or at slower shutter speeds (Fig. 27).

The lens aperture is determined by the calculation table indicated on the flash unit. Specially designed and developed automatic flash units are available for your Chinon CS-4 camera as optional accessories. These highly advanced electronic flash units permit carefree flash photography. Look at the following fantastic flash units by Chinon:



## SPECIFICATIONS OF CHINON AUTO FLASHES

<b>Model</b>	<b>Chinon Auto S-180</b>	<b>Chinon Auto S-240</b>	<b>Chinon Auto S-280</b>
1. Type :	Automatic Flash	Thyristor Electronic Flash (Power cut-off system)	Thyristor Electronic Flash (Power cut-off system)
2. Auto Flash System :	Yes	Yes	Yes
3. Guide Number in M . ASA 100 . ASA 400	18 36	24 48	28 56
4. Setting : . ASA 100 . ASA 400	One aperture setting F4 F8	Two aperture settings F4/F8 F8/F16	Two aperture settings F4/F8 F8/F16
5. Manual Flash :	Yes	Yes	Yes
6. Auto-operation : F4 (ASA 100) } F8 (ASA 400) } F8 (ASA 100) } F16 (ASA 400) }	1m - 4.5m (3.28 - 14.76 ft)  No	0.7m - 6m (2.30 - 19.68 ft)  0.7m - 3m (2.30 - 9.84 ft)	0.7m - 7m (2.30 - 22.96 ft)  0.7m - 3.5m (2.30 - 11.48 ft)
7. ASA Range :	25 - 400	25 - 400	25 - 400
8. Sensor Acceptance Angle :	Approx. 20°	Approx. 20°	Approx. 20°
9. Flash Duration : { Auto { Manual	1/30000 - 1/1500 1/1500	1/30000 - 1/750 1/750	1/30000 - 1/750 1/750
10. Recycling Time : Auto	10 sec.	0.5 - 10 sec.	0.5 - 10 sec.
11. Number of flashes : (Alkaline batteries)	Approx. 150 on manual	Approx. 200 on manual	Approx. 150 on manual
12. Bounce capability :	No	No	Yes
13. Illumination Angle :	for 35mm lens	for 35mm lens	for 35mm lens
14. Power Source :	Two AA size batteries (DC 3V)	Four AA size batteries (DC 6V)	Four AA size batteries (DC 6V)
15. Open Flash Button :	Yes	Yes	Yes
16. Sync. Jack :	Yes	Yes	Yes
17. Dimensions :	51 × 69 × 82 mm (2" × 2 <sup>3</sup> / <sub>4</sub> " × 3 <sup>1</sup> / <sub>4</sub> ")	58 × 77 × 85 mm (2 <sup>1</sup> / <sub>4</sub> " × 3" × 3 <sup>1</sup> / <sub>8</sub> ")	56 × 133 × 77 mm (2 <sup>1</sup> / <sub>8</sub> " × 5 <sup>1</sup> / <sub>8</sub> " × 3")
18. Weight :	160 g. (5.6 oz.)	210 g. (7.4 oz.)	250 g. (8.8 oz.)





## DEPTH OF FIELD

Depth of field designates the nearest and furthest limits of the area that will be sharp in the picture in front of and beyond the subject. Depth of field is controlled by the F/stop. The larger the lens opening, the shallower the depth of field. The smaller the lens opening, the greater the depth of field becomes (Fig. 28 & 29).

### \*Depth of Field Scale

The depth of field scale indicates (after focusing) the approximate area that will be sharp in the picture. Locate on the depth of field scale the corresponding pair of F/stop figures. The distance between these two F/stop figures on the focusing ring will be the area of sharpness in your picture (Fig. 30).

Your CS-4 camera accepts infra-red film. To use infra-red film an extra focusing adjustment must be made. After focusing note the figure that is adjacent to the green index mark on the distance scale (Fig. 31), then move that figure over to the infra-red mark engraved on the lens. This adjustment is only required for black and white infra-red film. When using color infra-red film, focus should be performed in the normal manner.

**NOTE:** Read the instructions carefully packed with the infra-red film for further information.

Your Chinon CS-4 is a precision instrument. When used with care, it will provide years of trouble free service. Protect your camera from dirt, rain, dampness, and excessive heat. Avoid touching the lens. To clean the lens, wipe it gently with a soft lintless cloth or lens tissue. Do not use eyeglass tissue as this might scratch the lens coating.



## OPTIONAL ACCESSORIES

### \*Standard lenses

50mm f/2.8  
f/1.9

55mm f/1.7 multicoated  
f/1.4 multicoated  
f/1.2

### \*Wide-angle lenses

28mm f/2.8 multicoated  
35mm f/2.8 multicoated

### \*Telephoto lenses

135mm f/2.8 multicoated  
200mm f/3.5 multicoated  
300mm f/5.6 multicoated  
500mm f/8.0 mirror lens

### \*Zoom lenses

28-50mm f/3.5-4.5 multicoated  
35-100mm f/3.5-4.3 multicoated  
MACRO  
80-200mm f/3.8 multicoated MACRO

### \*Accessories

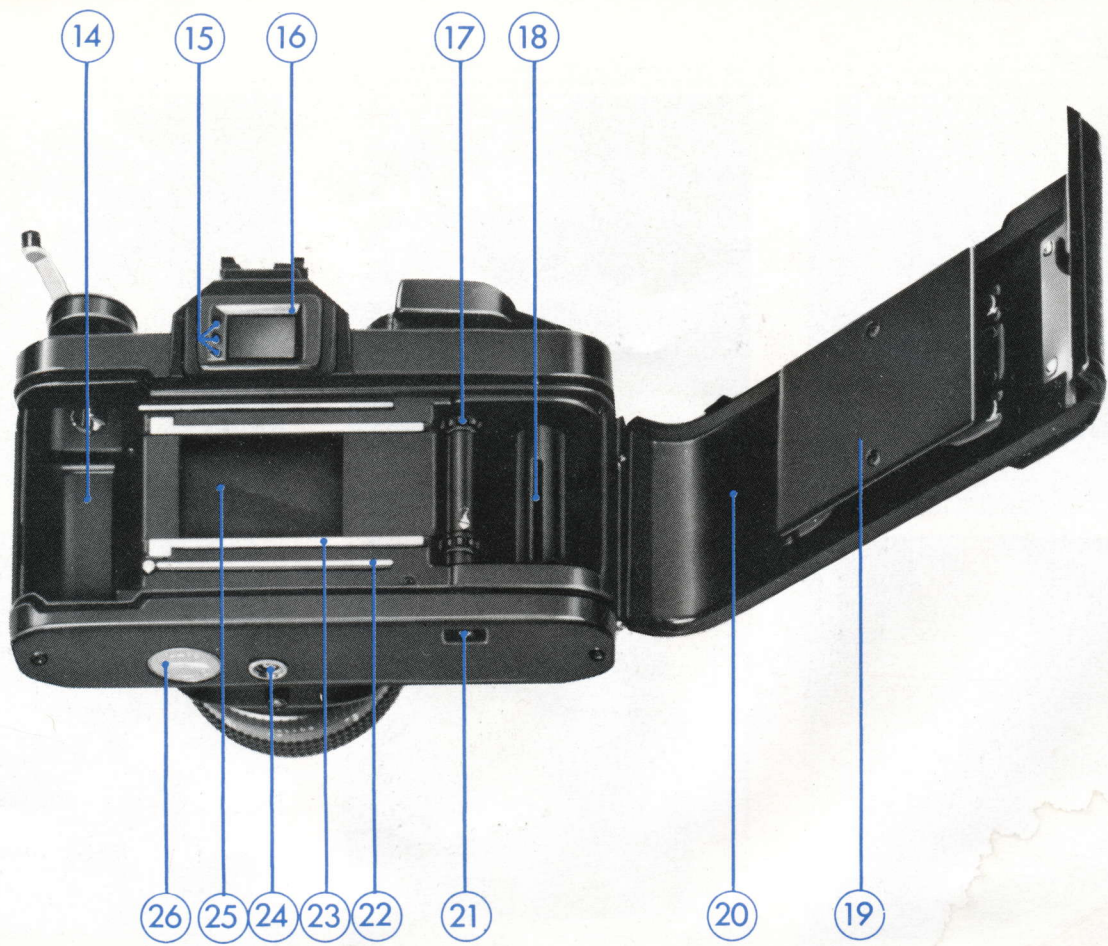
Auto Flash S-180  
Auto Flash S-240  
Auto Flash S-280  
Synchro-eye for Flash (Slave unit)  
Filter 49mm (Skylite, UV, ND4X, Y2, PL)

Rubber Eyepiece  
Eyepiece Adaptor (-3, +1, +3)  
Rubber Lens Hood  
Auto Extension Ring  
Bellows  
Mini-copy Stand  
Spare Ring for Mini-copy Stand  
Cable Release Adaptor 13 inch  
Angle Finder  
Table Tripod  
Neck Strap  
1.5V Alkaline Battery

(2 pcs. in one set)

2 Clips Lens Cap  
Eyepiece Cover  
Body Cap  
and many more





14

15

16

17

18

26

25

24

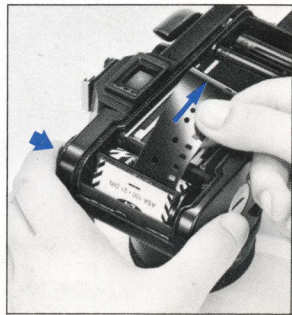
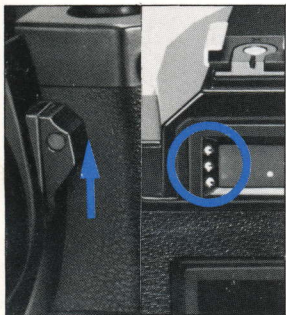
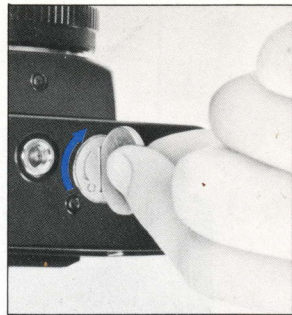
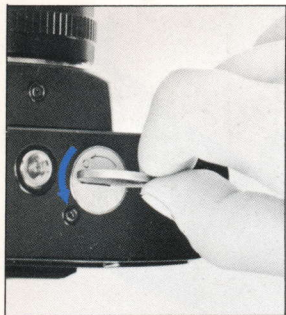
23

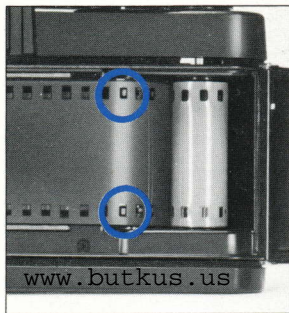
22

21

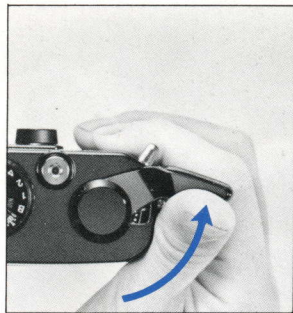
20

19





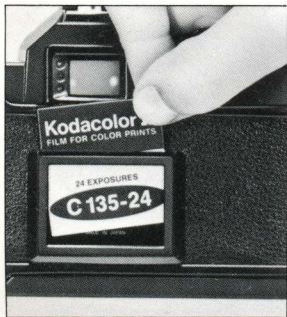
7



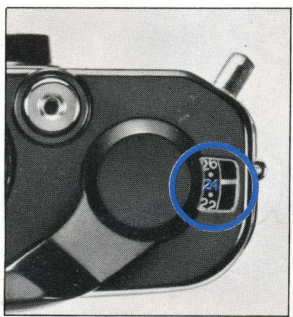
8



9



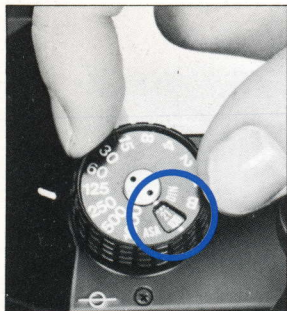
10



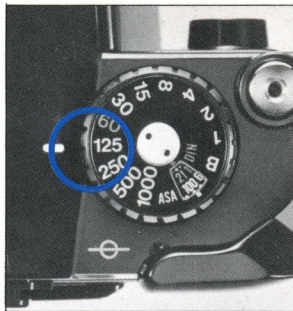
11



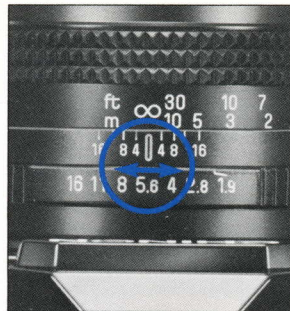
12



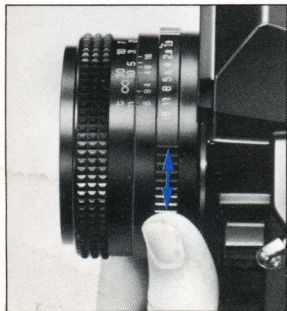
13



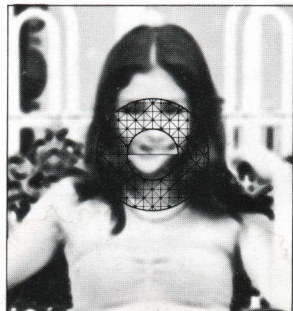
14



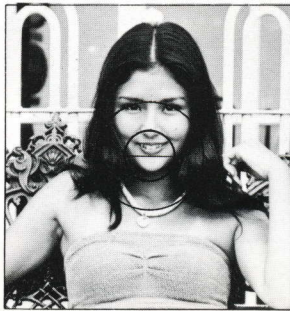
15



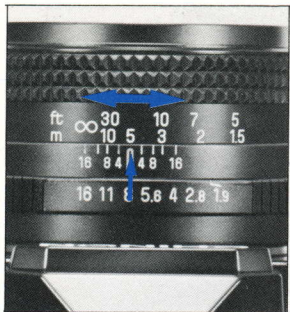
16



17



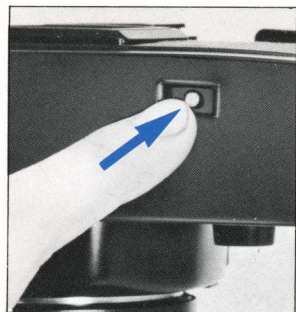
18



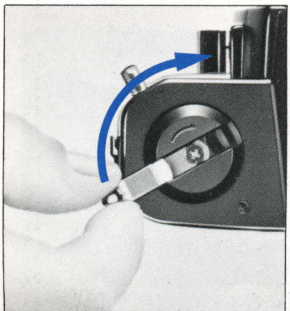
19



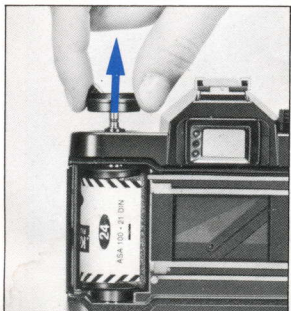
20



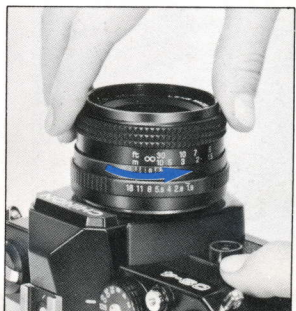
21



22



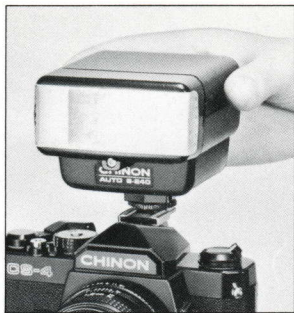
23



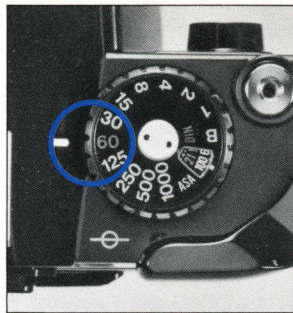
24



25



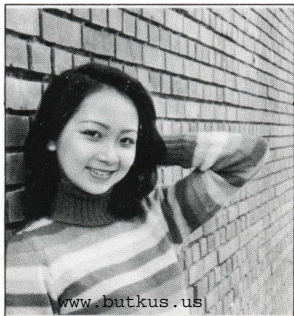
26



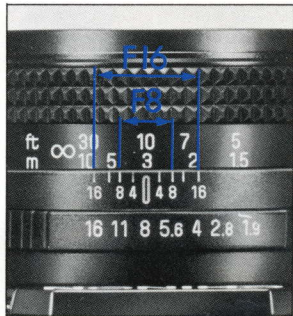
27



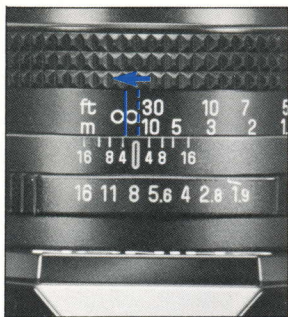
28



29



30



31